

# THE DAWSON

28' X 64' DOUBLEWIDE

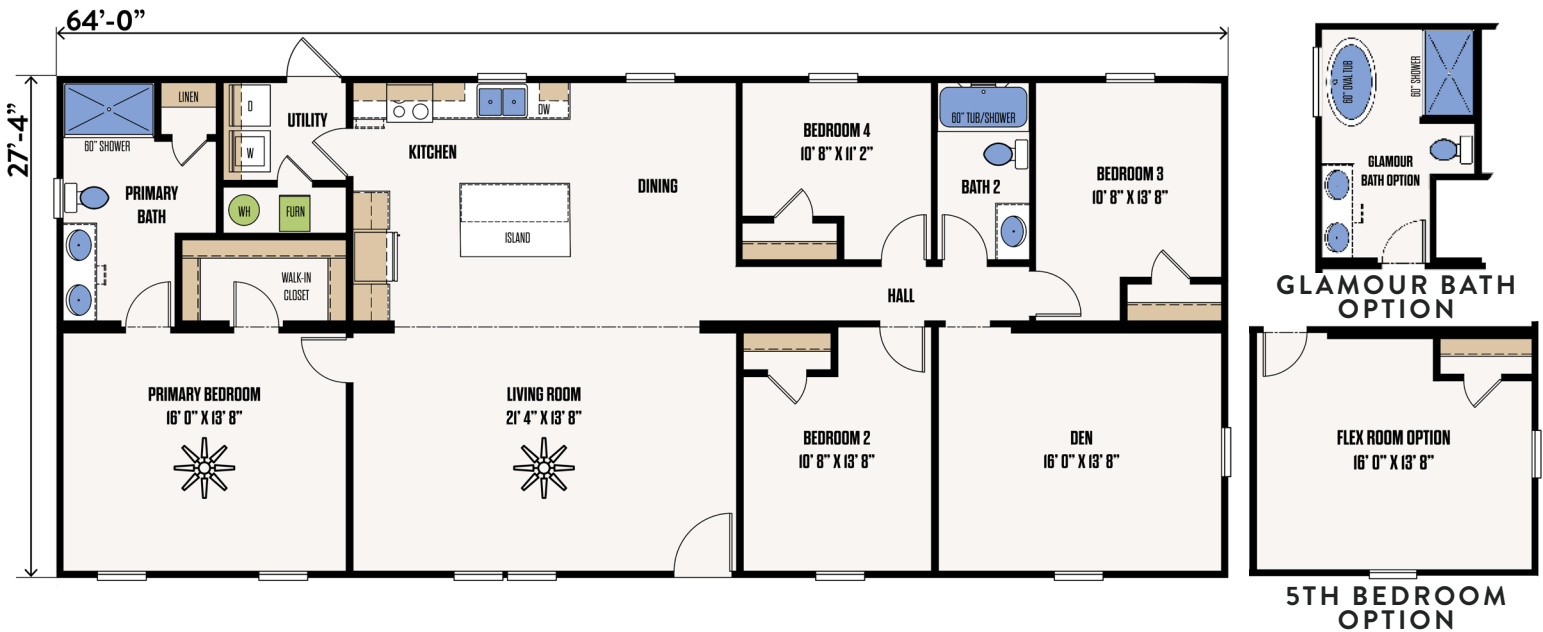
4 BED X 2 BATH - 1,749 SF

5TH BEDROOM OPTION

GLAMOUR BATH OPTION

## FLOORPLAN

MODEL #28643A



## STRUCTURAL FEATURES

2 X 4 INTERIOR WALLS

GALVALUME METAL ROOF

R-11-11-28 INSULATION

OVERHEAD AC DUCTS

SMART PANEL SIDING

OSB T & G DECKING

16" ON CENTER FLOOR JOIST

LOW E THERMOPANE WINDOWS WITH ARGON GAS

## INTERIOR FEATURES

TAPE AND TEXTURE THROUGHOUT\*

42" OVERHEAD CABINETS

CEILING FANS (LIVING ROOM & PRIMARY BEDROOM)

FRIGIDAIR STAINLESS STEEL 30" RANGE

\*EXCEPT SMALL CLOSETS

STAINLESS STEEL FARM SINK

FRIGIDAIR STAINLESS STEEL 24" DISHWASHER

18' REFRIGERATOR W/ ICEMAKER

CERAMIC TILE BACKSPLASH (KITCHEN)

40 GALLON WATER HEATER

Prices, plans, dimensions, features, materials, specifications and availability are subject to change without notice or obligation. Renderings and floor plans are artists' depictions only and may vary from the completed homes. Please refer to working drawings for actual dimensions and square footage. Some features shown are optional.

Pricing information is provided for informational purposes only, actual prices may vary. Prices do not include taxes, site preparation costs or delivery fees. Nothing contained herein or on the website constitutes an offer to sell any product or service and no binding obligations will arise until final sales documents have been fully executed.